

# Input Tool

## Measurement Data Input Unit

**CATALOG No. E4250-264**



**Easy to import your measurement data to a spreadsheet software.**

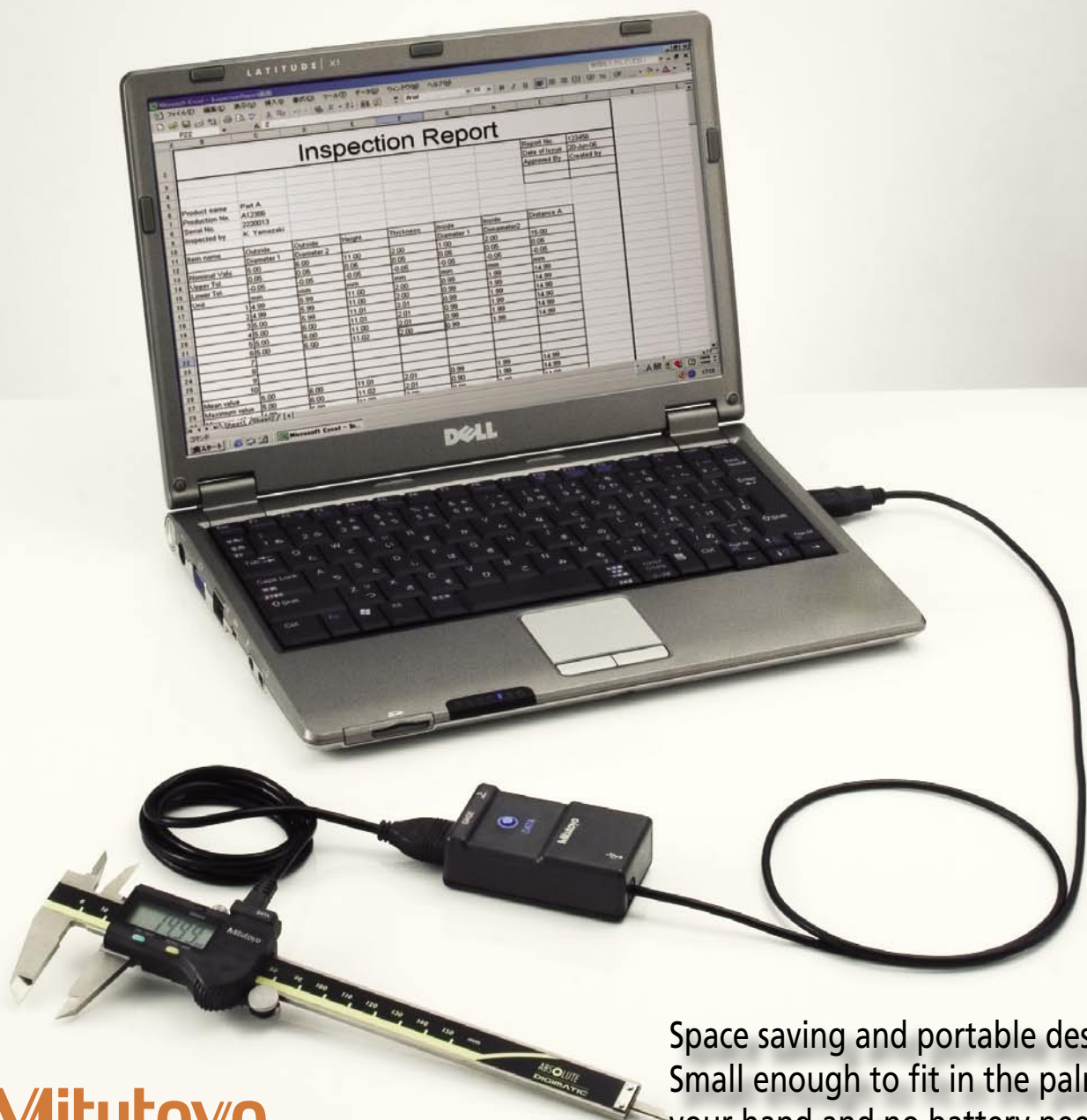
**Mitutoyo**

## Input Tool

# Digimatic gage - PC Data Transmission Device

By simply connecting the Input Tool to the connector of your PC and measuring gage the measurement data can be directly transmitted to the PC.

The USB and PS/2 signal conversion types allow you direct input of the measurement data into a spreadsheet, such as "MS-Excel®" and "Lotus 1-2-3" running on the PC. The RS-232C conversion type is available for a general application use.



Space saving and portable design. Small enough to fit in the palm of your hand and no battery needed.

**Mitutoyo**

# Digimatic - USB signal conversion

## Digimatic - PS/2 keyboard signal conversion

## Digimatic - RS-232C conversion

The operating system of the PC (Windows®98 or later) automatically recognizes the Input Tool, when it is connected to the PC's connector; therefore, tedious configuration of new hardware, such as driver settings, is no longer necessary.



Digimatic - USB signal conversion type

Data is entered in specified cell by simply pressing the data switch.

An Enter code is added to the value displayed by the measuring gage when the value is output to the PC. Therefore in Excel, the cursor automatically moves onto the next cell after data has been entered, if such a setting is selected in the program.

## Order No.

**264-012:** Digimatic - USB signal conversion type\*

\*Applicable to US keyboard, please contact Mitutoyo when using with other type of keyboard.

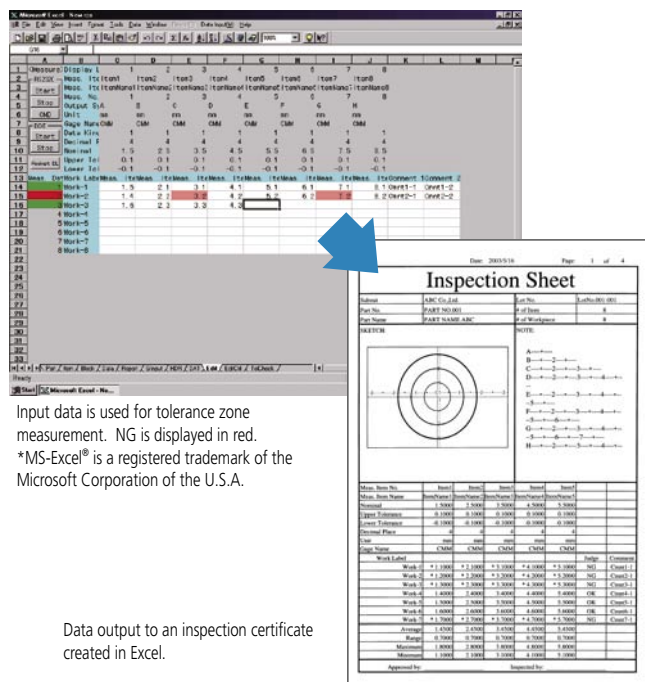
**264-005:** Digimatic - PS/2 signal conversion type

**264-007:** Digimatic - RS-232C conversion type

## Optional Program

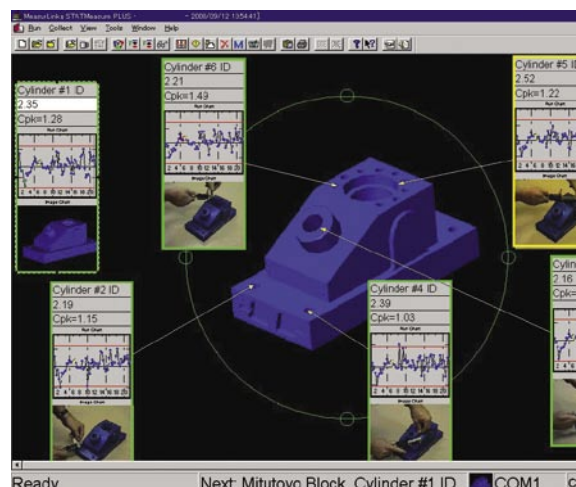
### MeasureReport (02ARA141)

Data input via the Input Tool is output to an inspection certificate in MS-Excel®.



### MeasurLINK SPC-Light (02AR150)

GO/NG judgment, process capability value, control chart, etc. are processed and displayed in real time on the measurement instruction screen using a bit map.





# Digimatic - USB signal conversion type

## Digimatic - PS/2 keyboard signal conversion type

## Digimatic - RS-232C conversion type

The Input Tool can replace a conventional interface.



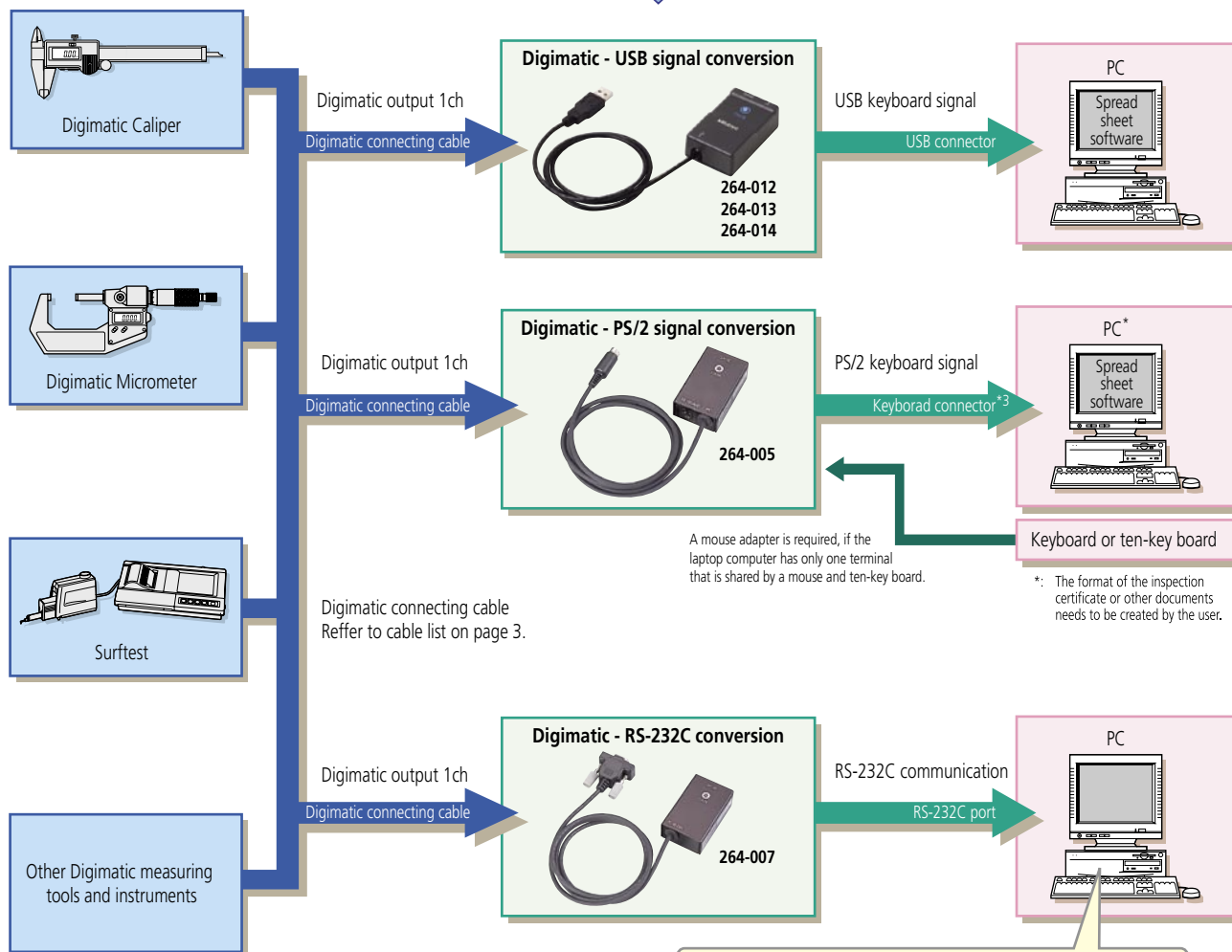
Multiplexer MUX-10F  
(input 4ch)



Digimatic Mini Processor  
DP-1VR (input 1ch + Printer)  
\*RS-232C cable (Optional)

Less expensive  
type is desired.

More compact  
and portable type  
is desired.



\*: The format of the inspection  
certificate or other documents  
needs to be created by the user.

In order to input data to a personal computer, application  
software that supports RS-232C communication is required.

Mitutoyo's optional software...

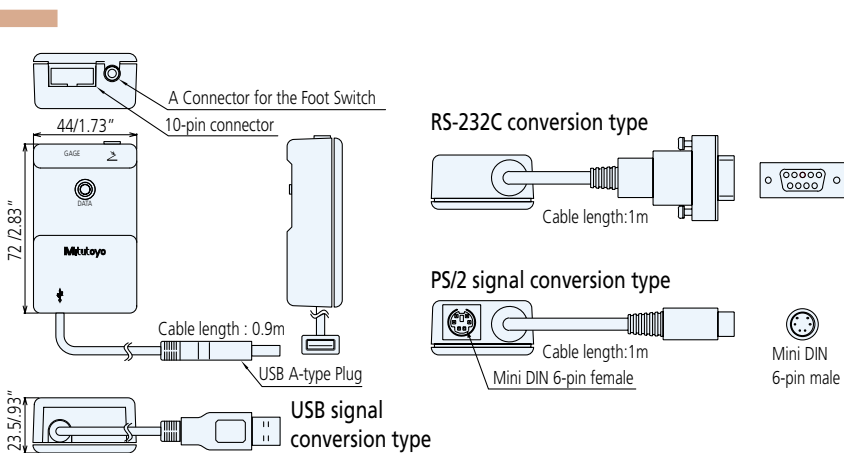
- Excel inspection table generation software **MeasureReport**
- Statistical process control software **MeasurLink SPC-Light**
- \*Please refer to the optional software below about detail.

Off-the-shelf software

- Hyper terminal (accessory for Windows)
- Excel, Lotus 1-2-3 + communications software
- Package software for quality control with communication facility.

## SPC Connecting Cables

	Order No. 1m (40")	2m (80")	Applicable Digimatic gage Series No./Product name	Series No./Product name
Straight 	905338	905409	500/Digimatic caliper 543/ABS Digimatic indicator IDC 550/Digimatic caliper 552/Digimatic carbon caliper	543/Digimatic indicator IDS 547/Digimatic thickness gage 551/Digimatic caliper 570/Digimatic height gage HDS
Back 	905689	905690	571/Digimatic depth gage 575/Digimatic indicator IDU	572/Digimatic scale unit 192/Digimatic height gage HDM
Right 	905691	905692		
Left 	905693	905694		
With data out switch 	959149 05CZA624	959150 05CZA625	500/ABS Digimatic caliper 573/ABS Digimatic caliper 500/ABS Coolant Proof caliper	572/ABS Digimatic scale unit
6 pins 	937387	965013	121/Digimatic bench micrometer 293/Quick micrometer 314/Digimatic V-anvil micrometer 323/Digimatic disk micrometer 326/Digimatic screw thread micrometer 340/Digimatic micrometer 342/Digimatic crimp height micrometer 369/Digimatic disk micrometer 395/Digimatic tube micrometer 422/Digimatic blade micrometer 337/Digimatic inside micrometer 345/Digimatic inside micrometer 468/Digimatic holtest 568/Borematic	164/Digimatic micrometer head 293/Digimatic micrometer 317/Digimatic uni-micrometer 324/Digimatic gear tooth micrometer 331/Digimatic spline micrometer 342/Digimatic point micrometer 343/Digimatic caliper micrometer 389/Digimatic sheet metal micrometer 406/Digimatic micrometer 329/Digimatic depth micrometer 339/Digimatic inside micrometer 350/Digimatic micrometer head 515/Digimatic height master
10 pins 	937386	965012	810/Hardmatic HH-120/140 810/Hardness testing machine ATK-F 810/Hardness testing machine ATK	810/Hardness testing machine ARK-F 810/Hardness testing machine ARK 810/Hardness testing machine ASK
Cable has the same connector plug at both ends. 	936937	965014	174/KC counter 302/Profile projector 318/Litematic 518/Linear height 542/Linear gage counter 544/Laser scan micrometer 178/Surface roughness tester 810/Hardness testing machine MVK-H	179/Digi-derm 303/Profile projector 515/Digital height master 519/Digital Mu-checker 543/Digimatic indicator IDF 574/Heightmatic 211/Roundness measuring machine



Our products are classed as regulated items under Japanese Foreign Exchange and Foreign Trade Law. Please consult us in advance if you wish to export our products to any other country. If the purchased product is exported, even though it is not a regulated item (Catch-All controls item), the customer service available for that product may be affected. If you have any questions, please consult your local Mitutoyo sales office.

## Technical Data

Input channel:	1ch (Mitutoyo Digimatic signal)
Output channel:	1ch (USB2.0, PS/2 keyboard signal or RS-232C/baud rate 2400bps)
Data input switch:	Provided, 1 million times switch life
Foot switch connector:	Provided
Power supply:	+5V/+12V* supplied via PC (*RS-232C conversion type) applicable models
Mass:	74g (USB signal conversion type) 70g (PS/2 signal conversion type) 91g (RS-232C conversion type)

Note: All information regarding our products, and in particular the illustrations, drawings, dimensional and performance data contained in this pamphlet, as well as other technical data are to be regarded as approximate average values. We therefore reserve the right to make changes to the corresponding designs, dimensions and weights. The stated standards, similar technical regulations, descriptions and illustrations of the products were valid at the time of printing. Only quotations submitted by ourselves may be regarded as definitive.

Our products are classed as regulated items under Japanese Foreign Exchange and Foreign Trade Law. Please consult us in advance if you wish to export our products to any other country. If the purchased product is exported, even though it is not a regulated item (Catch-All controls item), the customer service available for that product may be affected. If you have any questions, please consult your local Mitutoyo sales office.

Coordinate Measuring Machines	
Vision Measuring Systems	
Form Measurement	
Optical Measuring	
Sensor Systems	
Test Equipment and Seismometers	
Digital Scale and DRO Systems	
Small Tool Instruments and Data Management	

### Mitutoyo Scandinavia AB

Släntv. 6 • Box 712  
SE-194 27 Upplands Väsby  
Tel: 08-594 109 50  
Fax: 08-590 924 10  
info@mitutoyo.se  
www.mitutoyo.se

**Mitutoyo**